



Kernel for Word

“Opt the Easiest Way to Rebuild and Repair
Corrupt Word Document Files”

PRODUCT GUIDE

Table of Contents

1.	Introduction to Kernel for Word	4
1.1	Using this Manual	4
1.2	About Kernel for Word	5
1.3	Salient Features	5
1.4	Who Should Use this Software?	5
2.	Getting Started	6
2.1	Installation Pre-requisites.....	6
2.2	Downloading Kernel for Word for the First Time	7
2.3	Install Kernel for Word	7
2.4	Start Kernel for Word	8
2.5	Uninstall Kernel for Word	8
3.	Software Interface	9
3.1	Menu-bar.....	9
3.2	Tool-bar.....	10
3.3	Status Bar	11
3.4	Buttons Used.....	12
4.	Repairing .DOC Files.....	13
5.	Full Version	17
5.1	Requirement of Full Version.....	17
5.2	Purchasing Full Version.....	17
6.	Support.....	18
7.	Troubleshooting	19
7.1	Common Issues	19
7.2	Frequently Asked Questions	19
8.	Legal Notices	20
8.1	Copyright	20
8.2	Trademark	20
8.3	Disclaimer	20
8.4	License Agreement	20



Table of Figures

Figure 3.1: File Menu 9

Figure 3.2: Tools Menu..... 10

Figure 3.3: Help Menu 10

Figure 3.4: Status Bar 12

Figure 4.1: Main Window 13

Figure 4.2: Select Files..... 14

Figure 4.3: Repair Process 15

Figure 4.4 Browse Folder for Saving Files 16

1. Introduction to Kernel for Word

Welcome to the user manual for Kernel for Word, the most effective and convenient .doc file repair tool available that repairs corrupt MS Office Word documents. This user manual comprises step by step guidelines on using Kernel for Word.

1.1 Using this Manual

This user manual is intended to guide users on using Kernel for Word. We suggest that first time users should read this user manual completely and carefully before proceeding to use the software. However, if you are an experienced user, you can use the table of contents to find out information pertaining to the tasks that you need to perform by using Kernel for Word.

You can use the table of contents to navigate through different sections of this user manual. The table of contents lists all the sections that are contained in this user manual in chronological order. The user manual comprises the following sections:

- Introduction
- Getting Started
- Software Interface
- Repairing .DOC files
- Full Version
- Support
- Troubleshooting
- Legal Notices

Certain abbreviations have been used throughout this manual. For clear understanding of the contents of this user manual, please go through the list of abbreviations, mentioned below, before reading the manual.

1.1.1 List of Abbreviations

DOC: Word Document File

MS: Microsoft

RAM: Random Access Memory

MB: Mega-Byte

GB: Giga-Byte



for Word

1.2 About Kernel for Word

Kernel for Word is file repair software for MS Office Word documents. This software repairs MS Office Word document files that become inaccessible due to unexpected system shutdown, bad sectors in the disk, error opening file, power failure, virus attacks, media errors, etc.

You might be familiar with the following error messages if you have encountered MS Office Word .doc file corruption before:

- The document name or path is not valid
- Check the file permissions for the document or drive
- Use the file open dialog box to locate the document
- General Input/output error
- The file could not be repaired therefore, cannot be reopened

Kernel for Word quickly and effectively resolves the above mentioned errors by repairing corrupt .doc file, keeping the complete document format intact. It restores tables, bullets, embedded images, headers, footers, font style, hyperlinks, OLE objects and all other components of the corrupt Word document.

1.3 Salient Features

Salient features of Kernel for Word include:

- Efficient repair algorithms to quickly repair even heavy files
- Supports almost all versions of MS Office Word for recovery
- User friendly graphical user interface, no technical skills required
- Supports Rich Text Format (RTF)
- Free demo to test the capabilities of the tool before purchasing it

1.4 Who Should Use this Software?

The capability of Kernel for Word to repair large sized .doc files makes it appropriate for use by professionals or home users, who keep their important data stored in MS Office Word documents.

Software is also suitable for other MS Office Word users, who have lost their important data stored in .doc files due to .doc file corruption. This corruption could have been caused due to virus attacks, improper system shutdown, installation of unsupported software, media corruption, etc.



2. Getting Started

Now that you have understood the features and potential of Kernel for Word, you are ready to get hands on experience of the software. To start repairing .doc files, you will first need to download and install this software.

It is strongly recommended that before installing Kernel for Word, you should go through the installation pre-requisites for the software so that it can be assured that your computer is appropriately configured to run the software.


2.1 Installation Pre-requisites

The various pre-requisites for installing and running Kernel for Word can be broadly classified into two major categories – Hardware requirements and Software requirements.

2.1.1 Hardware Requirements:

The hardware requirements for installing the software are as follows:

- Pentium Class Processor
- Minimum 64MB RAM (128 MB recommended)
- 10MB for Software installation
- Disk Space - Enough space to store the repaired files

 You should have at-least 10 MB of free disk space if you want to repair and save a 10 MB.doc file.

2.1.2 Software Requirements:

The software requirements for installing the software can further be grouped into two categories – Operating system requirements and MS Office version requirements.

The requirements are as follows:

2.1.2.1 Operating System Requirements

Supported operating systems:

- Windows Vista
- Windows XP
- Windows 2003
- Windows 2000



- Windows NT
- Windows 98
- Windows 95

2.1.2.2 MS Office Version Requirements

Supported MS Office versions:


- MS Word 2003
- MS Word XP
- MS Word 2000
- MS Word 2002
- MS Word 98
- MS Word 97
- MS Word 95
- MS Word 6.0

2.2 Downloading Kernel for Word for the First Time

After checking your computer with the prescribed system requirements for Kernel for Word, you can download and install the software on your computer. You can buy the full version of the software from any one of our authorized resellers– Element5, Asknet and 2CO.

If you want to try using Kernel for Word before buying it, you can download the evaluation version from the following link:

<http://www.nucleustechnologies.com/Download-Word-Document-Repair-Software.php>

 You can repair .doc files saved on your system by using the evaluation version of Kernel for Word; however, the repaired file will not be saved. To save the repaired DOC file you need to buy the Full version of the software.

2.3 Install Kernel for Word

After downloading the installer file for Kernel for Word, you can install the software by running the file. To install Kernel for Word:

1. Double-click the Kernel for Word installer.
2. Follow the on-screen instructions.

The **Setup Installation Complete** screen will be displayed.

3. Click **Finish** to launch the software.

2.4 Start Kernel for Word

To start Kernel for Word:

Click the **Start → All Programs → Kernel for Word**

Alternatively, you can launch Kernel for Word by double-clicking the shortcut icon available on the desktop and Quick Launch icon.


2.5 Uninstall Kernel for Word

You may need to uninstall and re-install Kernel for Word. To uninstall Kernel for Word:

1. Click the **Start → All Programs → Kernel for Word → Uninstall Kernel for Word**

A warning message will be displayed.

2. Click **'Yes'** to uninstall Kernel for Word.

 Before proceeding to uninstall Kernel for Word, you must ensure that the software is not running.

You can alternatively uninstall Kernel for Word from the **Control Panel** by performing the following steps:

1. Click the **Start Menu → Control Panel** and then double click the **Add or Remove Programs** icon.

2. Select **Kernel for Word** and click **Remove**.

A warning message will be displayed.

3. Click **'Yes'** to uninstall Kernel for Word.

3. Software Interface

Now that Kernel for Word has been installed on your computer, you can start using the software after getting acquainted with the software interface.

3.1 Menu-bar

The menu-bar of Kernel for Word comprises three main menus – File, Tools, and Help.

3.1.1 File Menu

The **File** menu comprises four menu items.

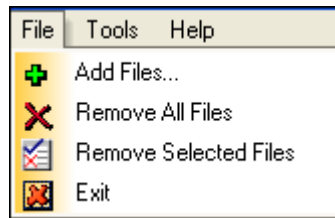


Figure 3.1: File Menu

Menu items in the **File** menu:

Field Name	Field Description
Add Files	Select to add the corrupt .doc files for repairing
Remove All Files	Select to remove all files from the list of files to be repaired
Remove Selected Files	Select to remove selected files from the list of files to be repaired
Exit	Select to close the software

3.1.2 Tools Menu

The **Tools** menu comprises two menu items.



Figure 3.2: Tools Menu

Menu Items in the Tools menu:

Field Name	Field Description
Setting	Select to configure the name of the repaired files
Liveupdate	Select to update the software with the available version in the Nucleus server

3.1.3 Help Menu

The **Help** menu comprises three menu items.

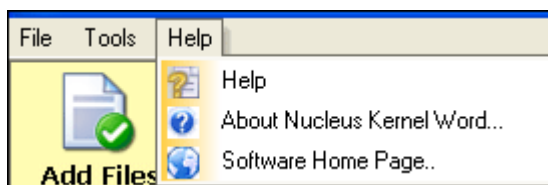








Figure 3.3: Help Menu

Menu items in the Help menu:

Field Name	Field Description
Help	Select to get the help guide of the software
About Nucleus Kernel Word...	Select to view version-related and support information of Kernel for Word
Software Home Page...	Select to open the software homepage

3.2 Tool-bar

The tool-bar in Kernel for Word is displayed below the menu-bar. The tool-bar provides a convenient and user-friendly method to perform certain actions that can also be performed by using the menu-bar. Read the information in the table below to find out more details about the tool-bar buttons:

Button	Button Name	Button Description
	Add Files	Select to browse and list corrupt .doc files stored on your system
	Repair Files	Select to repair selected file(s)
	Save Files	Select to save the Repaired file(s)
	Settings	Select to change the file name prefix
	Live-Update	Select to get the latest version of the software
	Buy Online	Select to visit the software website page

3.3 Status Bar

Status bar is displayed at the bottom of the software window. The text 'Ready' is displayed on the status bar if Kernel for Word is ready to be used. Status bar also displays the text 'CAP', 'NUM', 'SCRL' which respectively correspond to the Caps Lock, Num Lock, and Scroll Lock keys on your keyboard. If any of these keys are pressed, the corresponding text will be displayed.




Ready

CAP NUM SCRL

Figure 3.4: Status Bar

3.4 Buttons Used

Apart from the standard options available in the menu-bar and the tool-bar, following are the other main buttons:

	Click to start with the repair process
	Click to remove all the files listed to repair
	Click to remove selected files

4. Repairing .DOC Files

Now that you have complete familiarity of the user interface of Kernel for Word, you are ready to repair .doc files. To repair .doc files:

1. Launch Kernel for Word

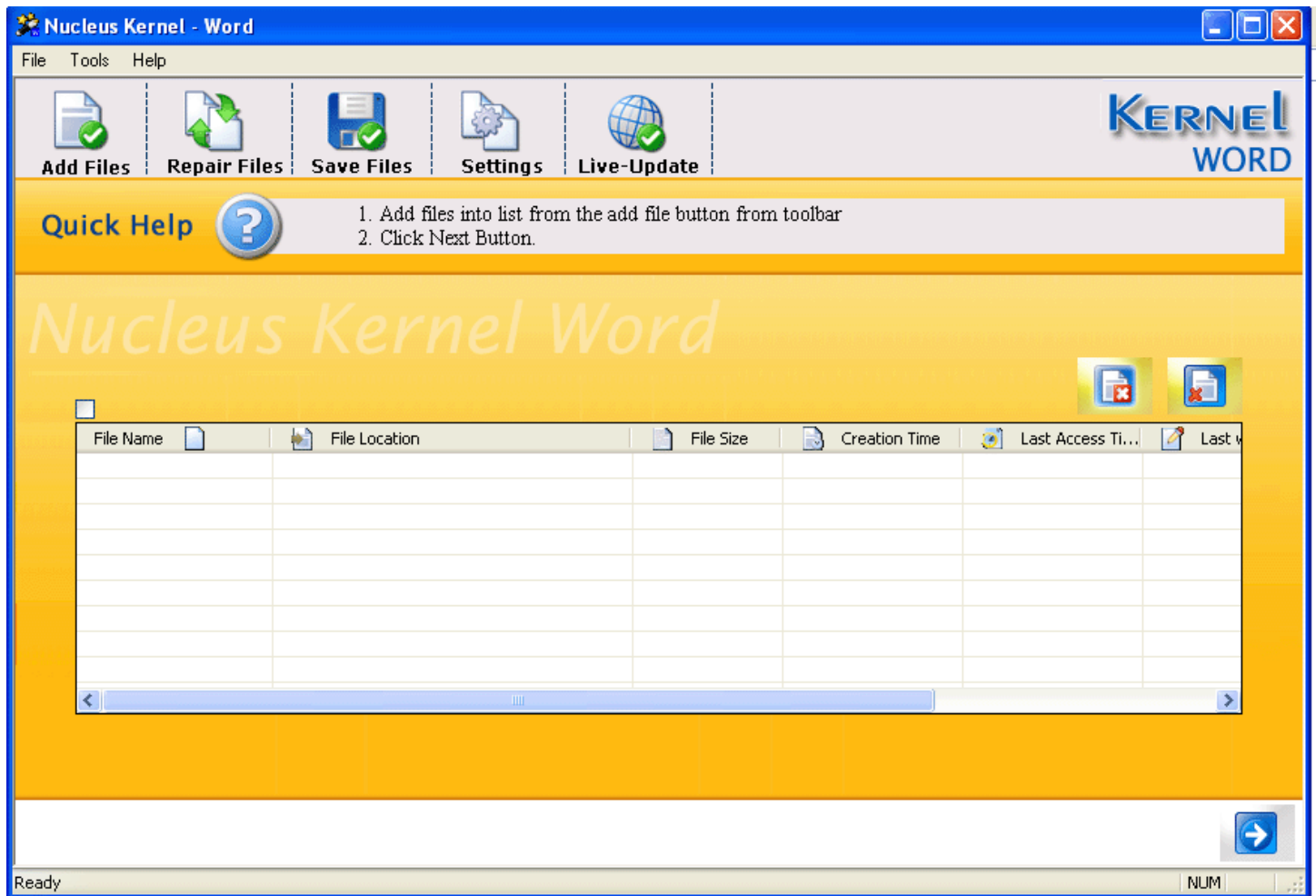



Figure 4.1: Main Window

2. Click the **Add Files** button to browse and list corrupt DOC files.

 You can select multiple .doc files to repair them in one repair cycle. You can remove any file from the list by selecting the file from the list and clicking **Remove Files**.

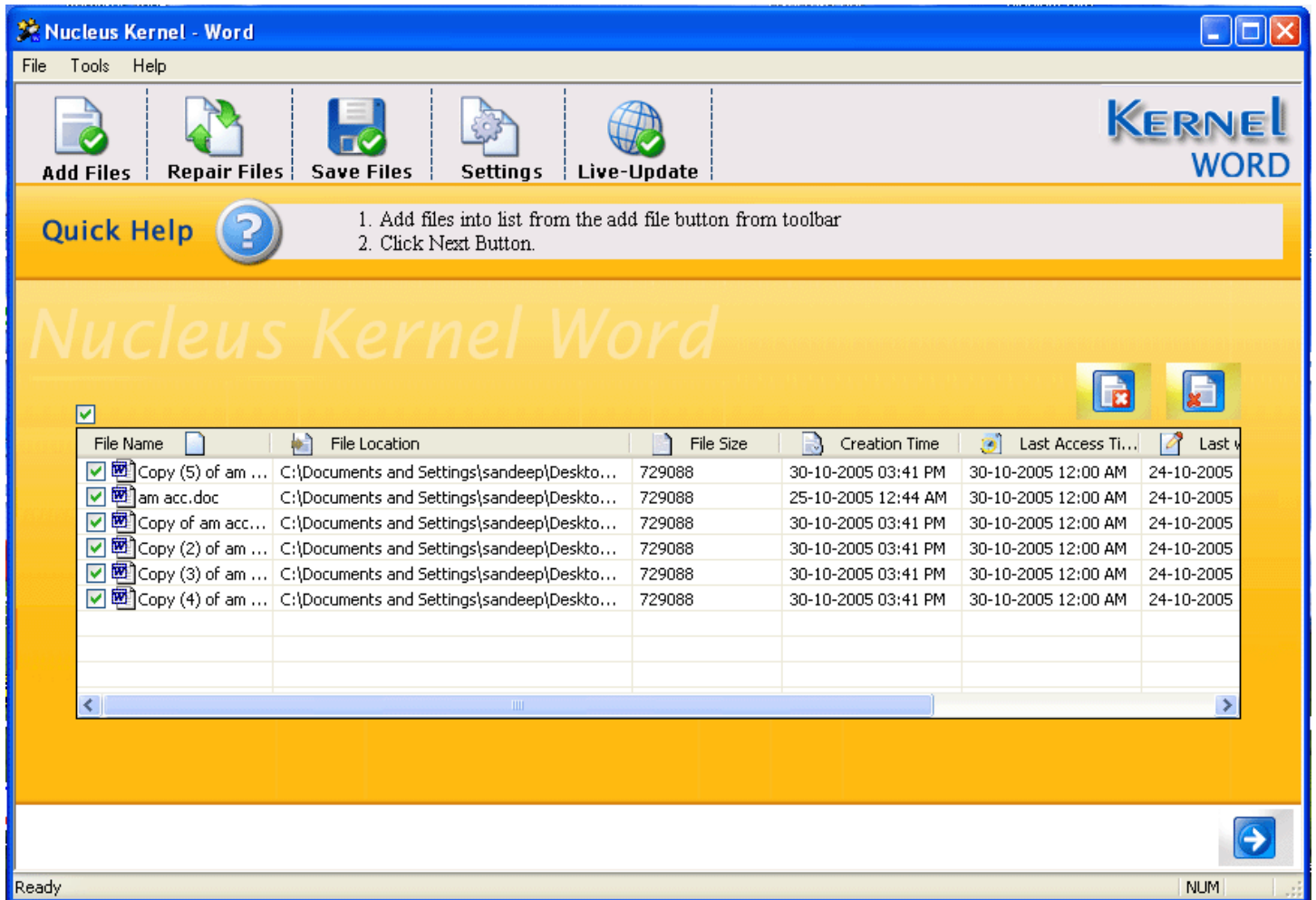


Figure 4.2: Select Files

3. Click **Next** to start with the .doc file repairing process.

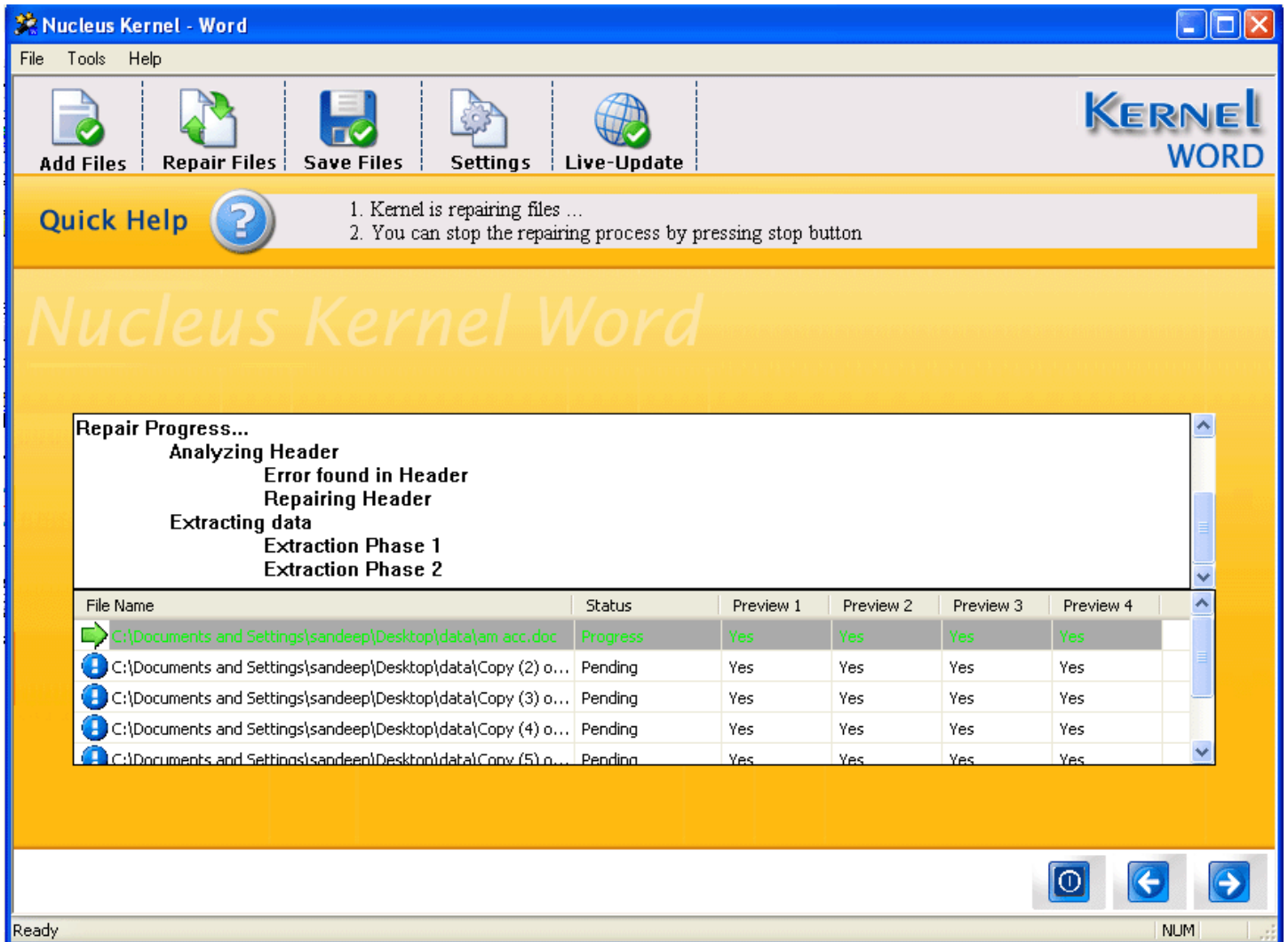


Figure 4.3: Repair Process

4. Once repair process is complete, you can save repaired files by clicking **Save File** button.

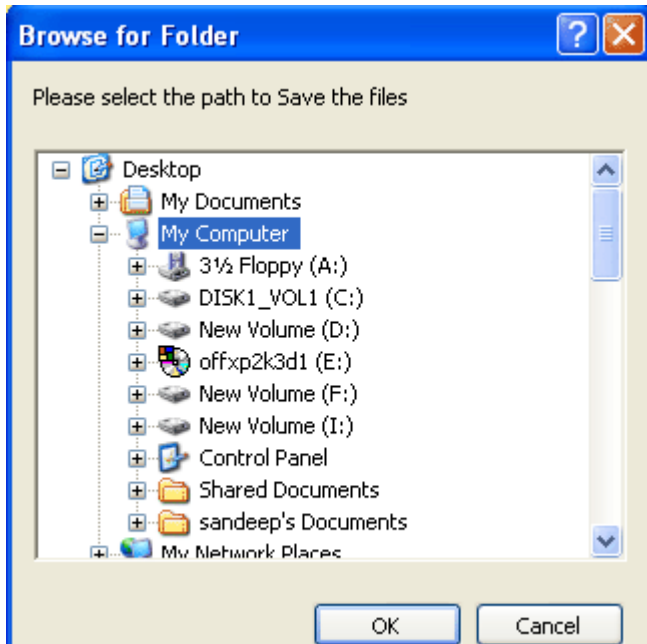


Figure 4.4 Browse Folder for Saving Files

5. Browse to your desired location and click **OK**.

5. Full Version

Although you can use Kernel for Word evaluation version for free and experience the capabilities of the software but there are certain features that are not available in the evaluation version.

5.1 Requirement of Full Version

By using the evaluation version of Kernel for Word, you can repair corrupt .doc files; however, you cannot save the repaired files.

You will need to buy the full version of the software to proceed with the saving process.

5.2 Purchasing Full Version

You can buy the full version of Kernel for Word from any one of our authorized resellers – Element5, Asknet and 2CO.

As soon the purchase transaction with our resellers gets completed, our sales team will send you an email comprising the URL to download the full version of Kernel for Word and activation details of the software.

6. Support

We have an extensive and efficient support system in place to assist our customers with all issues related to using Kernel for Word. The software comes with an embedded help manual that can be accessed by clicking **Help→Software Help** in the menu-bar. You can also press the F1 key on the keyboard of your computer to access the embedded help of Kernel for Word.

You can access the online help for Kernel for Word at <http://www.nucleustechnologies.com/Online-Helps.html>

View Animated Working demo of the software at <http://www.nucleustechnologies.com/word/animatedword.html>

We also have live support wherein you can chat with our software experts at <http://www.nucleustechnologies.com/Support.html> .

To talk on phone with our software experts call:

Help line:

+91-9818725861

1-866-348-7872 (Toll Free for US/CANADA)

You can also email us about your queries at;

sales@nucleustechnologies.com for Sales

support@nucleustechnologies.com for Support

contact@nucleustechnologies.com for General Queries



7. Troubleshooting

This section deals with your generic and specific queries pertaining to using Kernel for Word.

7.1 Common Issues

Why does Kernel for Word have limitations in evaluation copy?

The free evaluation version of Kernel for Word is intended to enable you to experience the capabilities of the software. You will need to buy the software to save the repaired files.

7.2 Frequently Asked Questions

How to Buy Kernel for Word?

You can buy Kernel for Word online at <http://www.nucleustechnologies.com/Buy-Word-Document-Repair-Software.php>

I am unable to view any data in the file preview window, what to do?

After successful file repair, Kernel for Word will display the file preview but in many cases due to intense corruption preview of contents may not appear in **Preview 1**, so check all the previews for contents.

[View Online Demo](#) to illustrate this process.

Can it recover deleted Word files from my hard drive?

No, Kernel Word is a **File Repair Software**, it can only repair corrupt files. To recover your deleted Word file use [Kernel for FAT + NTFS - Data Recovery Software](#)

I have lost my full version for Kernel for Word. Can you help me?

Please email us at sales@nucleustechnologies.com. Please include your name, address, email address, and order confirmation number (if you have it). We will be happy to help you.

How can I upgrade the software?

To upgrade the software you have to send an email to sales@nucleustechnologies.com. Please include your name, address, email address, order confirmation number and the name of the software upgraded to.

Would I get an invoice for my purchase?

Yes, we provide every customer with a soft copy of the invoice. This is sent on the same day, on the provided email.

8. Legal Notices

This section comprises the legal specification about Kernel for Word and the company NUCLEUS DATA RECOVERY.COM PRIVATE LIMITED

8.1 Copyright

NUCLEUS DATA RECOVERY.COM PRIVATE LIMITED, Nucleus Kernel accompanied user manual and documentation are copyright of NUCLEUS DATA RECOVERY.COM PRIVATE LIMITED, with all rights reserved. Under the copyright laws, this user manual cannot be reproduced in any form without the prior written permission of NUCLEUS DATA RECOVERY.COM PRIVATE LIMITED. No Patent Liability is assumed, however, with respect to the use of the information contained herein.

© NUCLEUS DATA RECOVERY.COM PRIVATE LIMITED. All rights reserved.

8.2 Trademark

Nucleus Kernel ® is a copyright work of NUCLEUS DATA RECOVERY.COM PRIVATE LIMITED

Windows 95®, Windows 98®, Windows ME®, Windows NT®, Windows 2000 Server®, Windows 2000 Advanced Server®, Windows 2003 Server®, Windows XP®, Windows Vista, MS-DOS and Open Office are registered trademarks of Microsoft Corporation and Sun Microsystems, Inc.

All other brand and product names are trademarks or registered trademarks of their respective companies.

8.3 Disclaimer

The Information contained in this manual, including but not limited to any product specifications, is subject to change without notice. NUCLEUS DATA RECOVERY.COM PRIVATE LIMITED provides no warranty with regard to this manual or any other information contained herein and here by expressly disclaims any implied warranties of merchantability or fitness for any particular purpose with regard to any of the foregoing NUCLEUS DATA RECOVERY.COM PRIVATE LIMITED assumes no liability for any damages incurred directly or indirectly from any technical or typographical errors or omissions contained herein or for discrepancies between the product and the manual. In no event shall NUCLEUS DATA RECOVERY.COM PRIVATE LIMITED, be liable for any incidental, consequential special, or exemplary damages, whether based on tort, contract or otherwise, arising out of or in connection with this manual or any other information contained herein or the use there of.

8.4 License Agreement

Kernel for Word Copyright © by NUCLEUS DATA RECOVERY.COM PRIVATE LIMITED

Your Agreement to this License

You should carefully read the following terms and conditions before using, installing or distributing this software, unless you have a different license agreement signed by NUCLEUS DATA RECOVERY.COM PRIVATE LIMITED. The terms and conditions of this License describe the permitted use and users of each Licensed Copy of Kernel for Word. For purposes of this License, if you have a valid license, you have the right to use a single Licensed Copy of Nucleus Kernel.

Scope of License

Each Licensed Copy of Kernel for Word may either be used by a single person or used non-simultaneously by multiple people who use the software personally installed on a single workstation. All rights of any kind in Nucleus Kernel, which are not expressly granted in this License, are entirely and exclusively reserved to and by NUCLEUS DATA RECOVERY.COM PRIVATE LIMITED. You may not rent, lease, modify, translate, reverse engineer, decompile, disassemble, or create derivative works based on, Nucleus Kernel, nor permit anyone else to do so. You may not make access to Nucleus Kernel available to others in connection with a service bureau, application service provider, or similar business, nor permit anyone else to do so.

Warranty Disclaimers and Liability Limitations

Kernel for Word, and any and all accompanying software, files, data and materials, are distributed and provided AS IS and with no warranties of any kind, whether expressed or implied. In particular, there is no warranty for the quality of data recovered. You acknowledge that good data processing procedure dictates that any program, including Nucleus Kernel, must be thoroughly tested with non-critical data before there is any reliance on it, and you hereby assume the entire risk of all use of the copies of Nucleus Kernel covered by this License. This disclaimer of warranty constitutes an essential part of this License. In addition, in no event does NUCLEUS DATA RECOVERY.COM PRIVATE LIMITED authorize you or anyone else to use Kernel for Word in applications or systems where Kernel for Word failure to perform can reasonably be expected to result in a significant physical injury, or in loss of life. Any such use is entirely at your own risk, and you agree to hold NUCLEUS DATA RECOVERY.COM PRIVATE LIMITED harmless from any and all claims or losses relating to such unauthorized use.

General

This License is the complete statement of the agreement between the parties on the subject matter, and merges and supersedes all other or prior understandings, purchase orders, agreements and arrangements. This License shall be governed by the laws of the State of Delhi. Exclusive jurisdiction and venue for all matters relating to this License shall be in courts and for a located in the State of Delhi, and you consent to such jurisdiction and venue. There are no third party beneficiaries of any promises, obligations or representations made by NUCLEUS DATA RECOVERY.COM PRIVATE LIMITED herein.

Any waiver by NUCLEUS DATA RECOVERY.COM PRIVATE LIMITED of any violation of this License by you shall not constitute, nor contribute to, a waiver by NUCLEUS DATA RECOVERY.COM PRIVATE LIMITED of any other or future violation of the same provision, or any other provision, of this License.